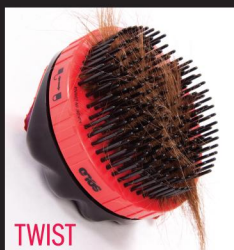


SOLOBRUSH™



BRUSH



TWIST



CLEAN

Brush – when brush is full, **Twist** – hair will drop from brush, **Clean** – twist back again.

SoloBrush was designed with the advice of a physiotherapist to be both wrist-friendly and suitable for left or right handed use. SoloBrush's innovative retractable bristle mechanism allows hair and dirt to be wiped away. It is ideal for manes and tails and when bathing animals to really clean their coats.

Instructions - place palm over top of brush and use the velcro strap to adjust to fit your hand. Twist the purple dial counter clockwise until the lock engages and begin brushing. Once the brush is full of hair twist purple dial clockwise until bristles are fully retracted. The hair will fall off the brush. Twist dial until it locks and continue brushing. Simply rinse under warm water and leave to dry.